

4. Pasa al pentagrama y canta.

Marca la respuesta correcta:

En la nota re' la plica se coloca:  encima  debajo

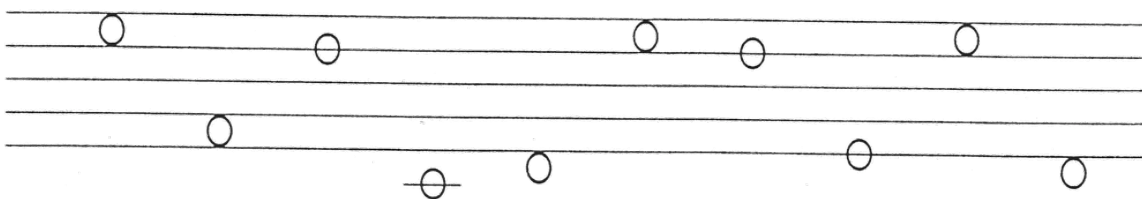
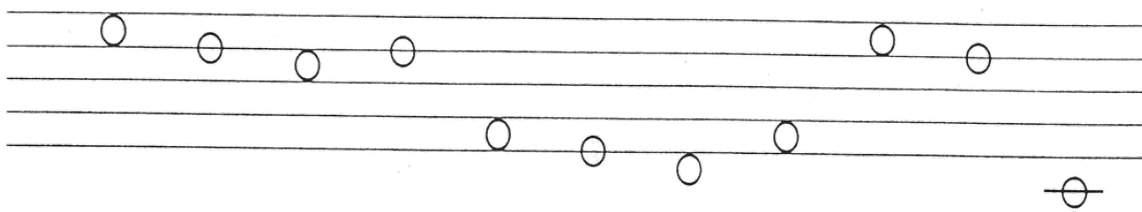
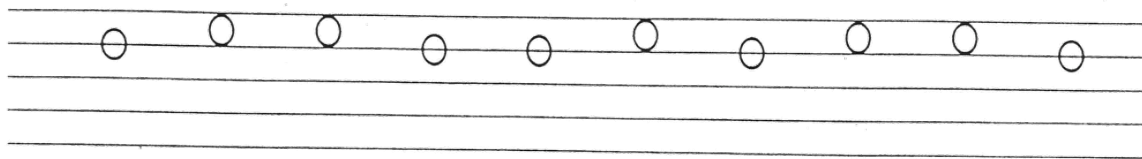
Contesta:

¿Dónde se coloca la plica en la nota si? \_\_\_\_\_

5. Señala con una X los fragmentos incorrectos.



ESCRIU EL NOM DE LES NOTES:



3. Encercla la nota més aguda :

Sol - (La)	Fa - Si	Sol - Mi	Re- - Do'
Mi' - Do'	Si - Re	Fa - Do'	Re' - Mi'
Si - La	Re' - La	Sol - Si	La - Fa

# I'm a Little Teapot

Canción Tradicional Inglesa



I'm a li- ttle tea- pot, Shart and stout,

The first line of music is written on a single staff in 4/4 time. It begins with a treble clef and a key signature of one flat (B-flat). The melody consists of quarter notes: G4 (quarter), A4 (quarter), Bb4 (quarter), C5 (quarter), Bb4 (quarter), A4 (quarter), G4 (quarter), and F4 (quarter). The lyrics are placed below the notes.



Here is my han- dle, Here is my spaut, When I sea the tea- cups

The second line of music continues on a single staff. It begins with a treble clef and a key signature of one flat. The melody consists of quarter notes: G4 (quarter), A4 (quarter), Bb4 (quarter), C5 (quarter), Bb4 (quarter), A4 (quarter), G4 (quarter), and F4 (quarter). The lyrics are placed below the notes.



Hear rne shaut, Pick rne up And pour me out!

The third line of music continues on a single staff. It begins with a treble clef and a key signature of one flat. The melody consists of quarter notes: G4 (quarter), A4 (quarter), Bb4 (quarter), C5 (quarter), Bb4 (quarter), A4 (quarter), G4 (quarter), and F4 (quarter). The lyrics are placed below the notes.

# PIRATAS DEL CARIBE

The image displays a musical score for the song "Piratas del Caribe". The score is written on six staves, each beginning with a treble clef and a 2/4 time signature. The music consists of a series of eighth and quarter notes, with some measures containing rests. The score is divided into measures by vertical bar lines, and the measure numbers 6, 11, 16, 21, and 26 are indicated at the start of their respective staves. The notation includes various note values, rests, and a key signature change to one sharp (F#) in the final measure of the sixth staff.